

A Village Estate



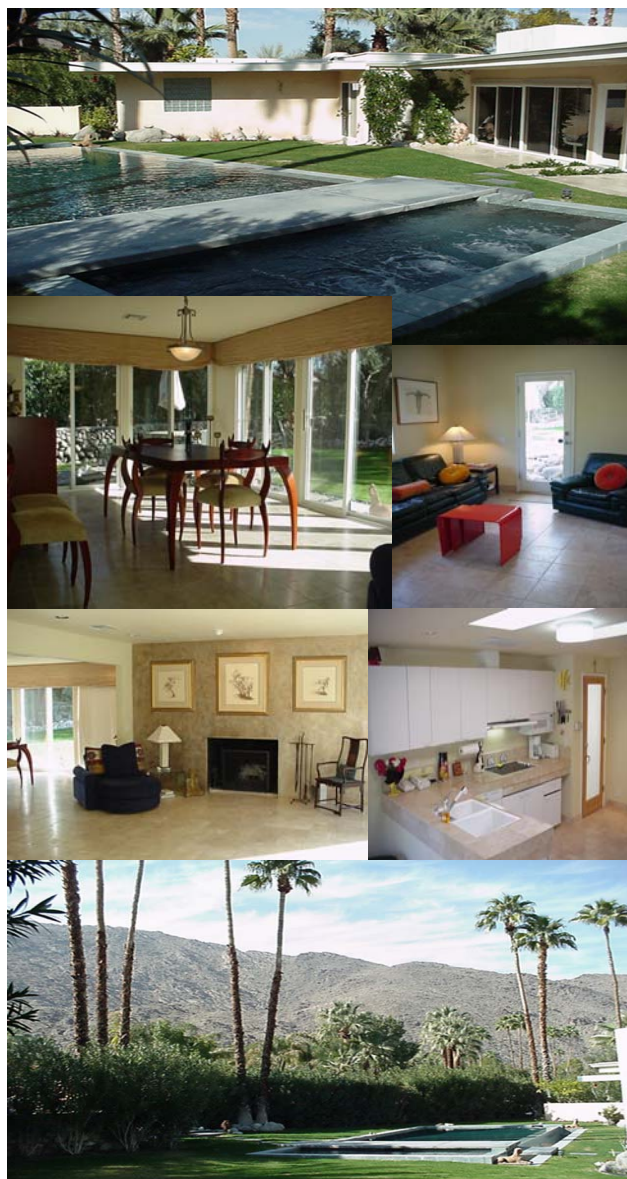
430 S. Patencio Rd.
Historic Tennis Club

OFFERED AT:
\$695,000.

A postmodern masterpiece! Exquisitely renovated 1950's "Albert Frey" influenced architecture is scenically sited in a secluded walled and gated compound of towering palms and looks onto the most magnificent mountain views Palm Springs has to offer! Truly a view to stir the soul. Its crisp clean lines and surfaces of travertine and glass visually invite the outdoors in and are certain to please! The fabulous 4 Bedroom, 3 Bath floor plan is designed for luxury and simplicity with separate guest/maids quarters. This upscale, sought after intimate tranquil sanctuary is just a short stroll to "The Village" of Palm Springs.

The property is further graced with a state-of-the-art salt water Infinity Pool and 10 person Spa and soothing waterfall. It is built on an angle to track the maximum exposure to the sun. Embrace the grandeur and remember self-indulgence feels good!

As the sunlight streams through this gracefully proportioned piece of Paradise and you reflect on your joys and successes in life, remember that only a privileged few will be able to call this "their" home... you could be next. After all...your **someday** is finally here and wishes do come true!



PRESENTED BY:

Jim Schwietz, CRS

Realtor to the Stars—Like YOU!

Direct: (760) 325-7827

Toll Free: (800) 774-7253

Email: jimsellsps@aol.com

Windermere
Coachella Valley