



Palm Springs Hot Properties

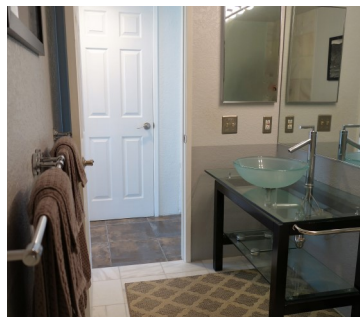
2701 E Mesquite Ave. N60
Mesquite Country Club

OFFERED AT:
\$199,000

Welcome to paradise! This warmly remodeled single level condominium, in what is often considered Mesquite Country Club's most desirable phase, is the perfect pied-à-terre for you to call home while enjoying all the many spectacular amenities that the Coachella Valley has to offer. At roughly 800 sq. ft. this end unit has the rare distinction of not having another condo above it – further enhancing your at home experience. Nestled into a quiet corner of a cul-de-sac away from the rest of the community, this one bedroom one bathroom residence offers the utmost of privacy available in Mesquite Country Club. Features include a bright and spacious living room & adjacent dining area both with vaulted ceilings. The efficiently “u-shaped” updated kitchen features a built-in breakfast bar, granite counters, recessed lighting, & newer appliances. The home also features a spacious remodeled bathroom. Your generously sized bedroom with voluminous vaulted ceilings opens to its own private patio on a secluded section of greenbelt. Off the living room you'll find another spacious dining patio overlooking the greenbelt with easy access to the one of the gated HOA pools and spa. Located in a highly desirable convenient and quiet area of South Palm Springs near Smoke Tree Commons plus the shopping and restaurants of Downtown, this condo is a perfect “welcome home” for your time in Palm Springs.

Statistical information includes:

Approximately 797 s.f. estimated (Buyer to Verify)
You own the land. HOA Fee: \$420/mo



JIM SCHWIETZ, CRS

REALTOR TO THE STARS — LIKE YOU!

Co-Listed with James Gault 310.621.7765 CalBRE #01985784

Direct: 760.325.7827 CalBRE #01229074 www.ps4sale.com

DISTINCTIVE SERVICE SINCE 1978

